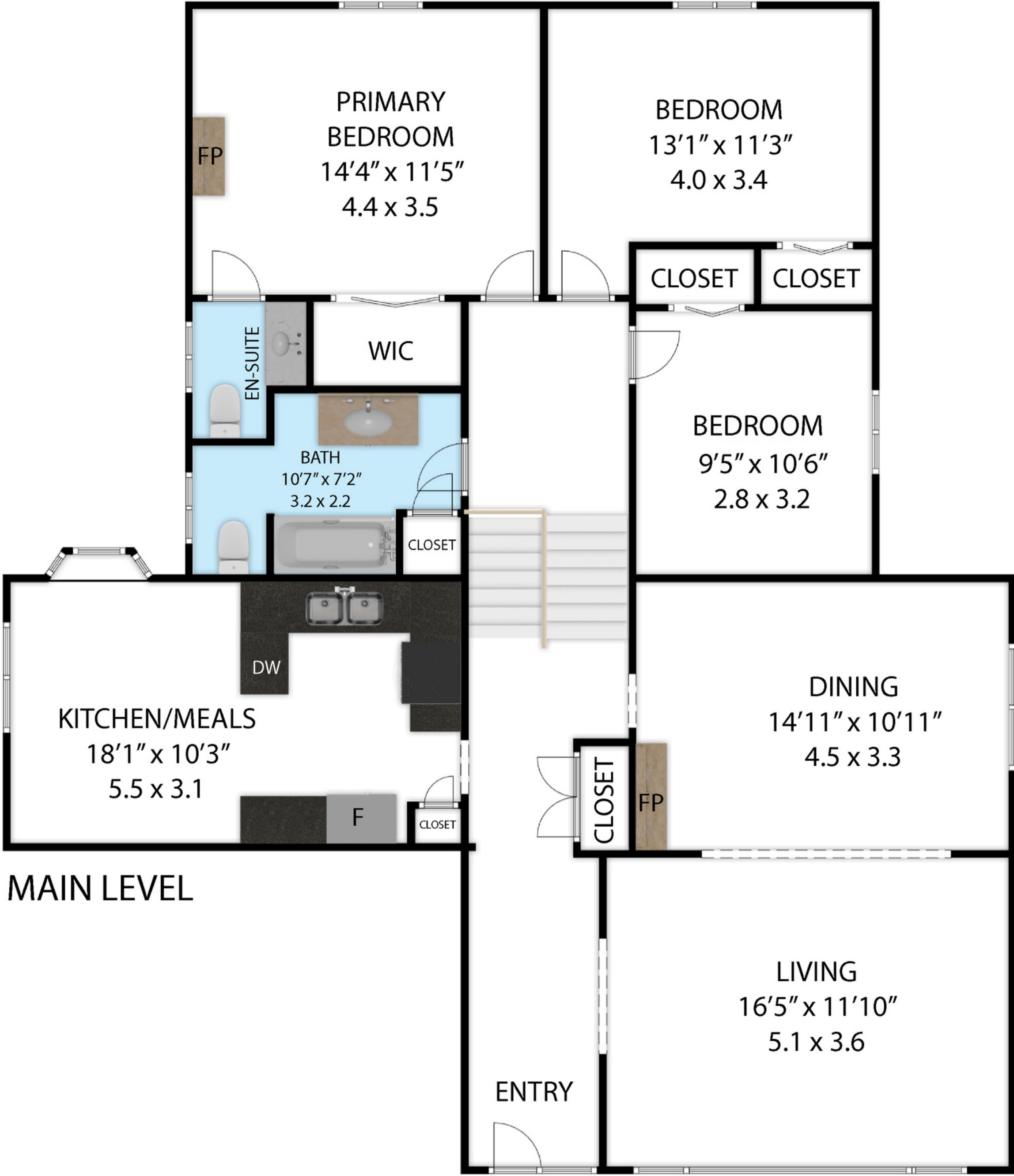
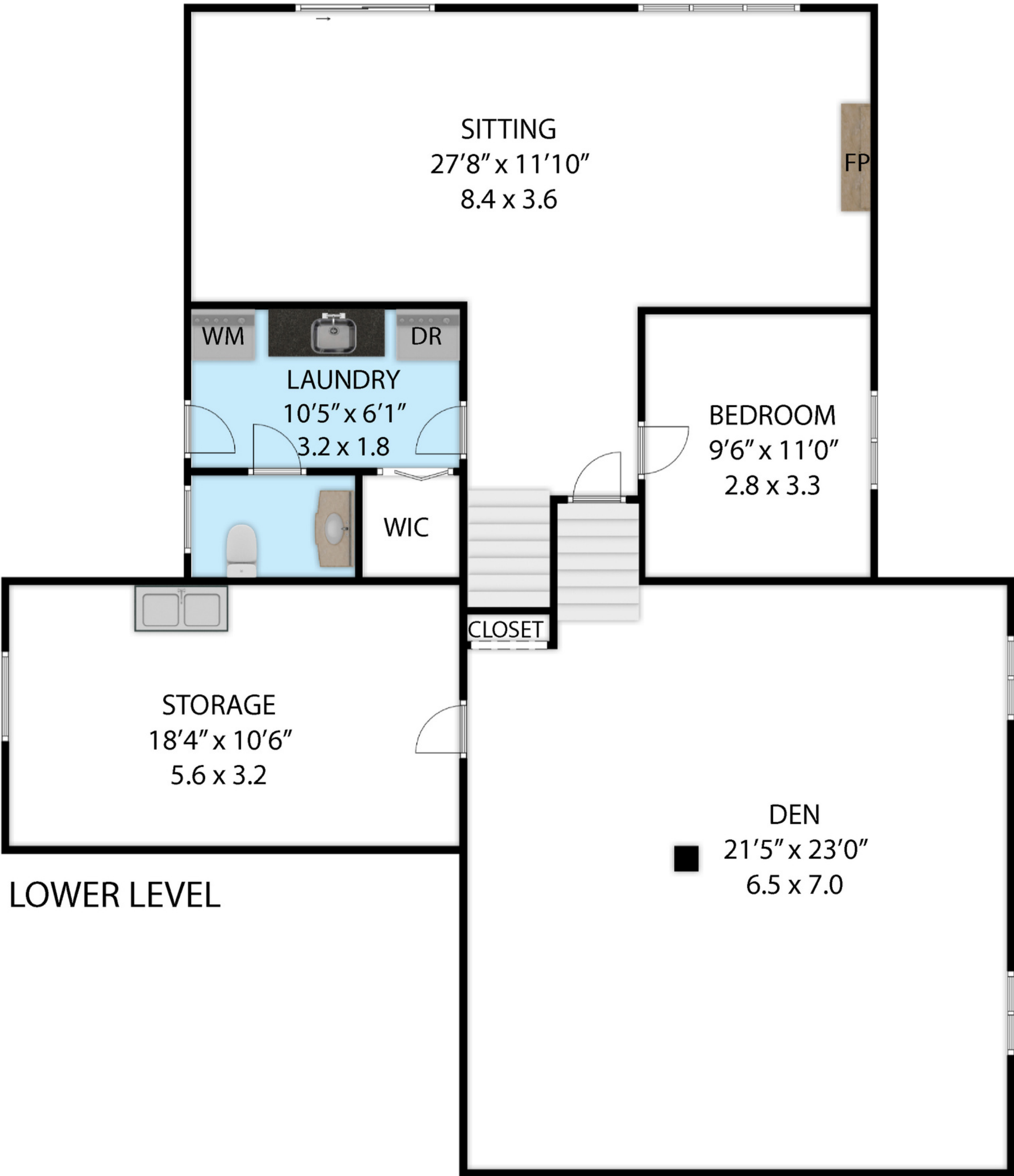


**3534 Stonecreek Crescent**  
TOTAL APPROX. FLOOR AREA 2,848 SQ.FT - 265 SQ.M  
Whilst every attempt has been made to ensure the accuracy of the floor plan contained here, measurements of doors, windows, rooms and any other items are approximate and no responsibility is taken for any error, omission, or misstatement. This plan is for illustrative purposes only and should be used as such by any prospective purchaser.

LOWER LEVEL	: 1,422 SQ.FT- 132 SQ.M
MAIN LEVEL	: 1,426 SQ.FT- 133 SQ.M
TOTAL AREA	: 2,848 SQ.FT- 265 SQ.M





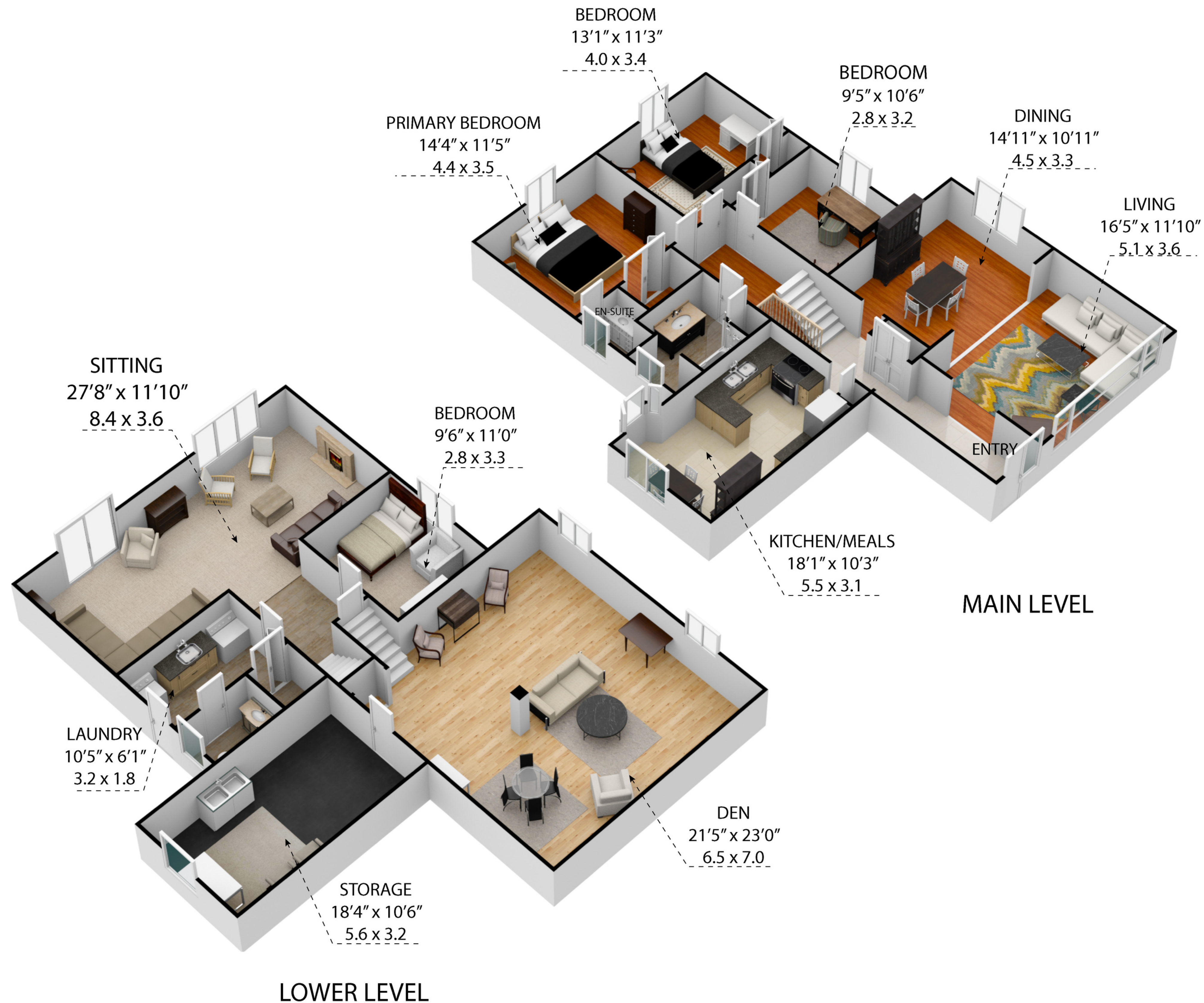
3534 Stonecreek Crescent

TOTAL APPROX. FLOOR AREA 2,848 SQ.FT - 265 SQ.M

Whilst every attempt has been made to ensure the accuracy of the floor plan contained here, measurements of doors, windows, rooms and any other items are approximate and no responsibility is taken for any error, omission, or misstatement. This plan is for illustrative purposes only and should be used as such by any prospective purchaser.

LOWER LEVEL	: 1,422 SQ.FT- 132 SQ.M
MAIN LEVEL	: 1,426 SQ.FT- 133 SQ.M
TOTAL AREA	: 2,848 SQ.FT- 265 SQ.M





**3534 Stonecreek Crescent**  
TOTAL APPROX. FLOOR AREA 2,848 SQ.FT - 265 SQ.M  
Whilst every attempt has been made to ensure the accuracy of the floor plan contained here, measurements of doors, windows, rooms and any other items are approximate and no responsibility is taken for any error, omission, or misstatement. This plan is for illustrative purposes only and should be used as such by any prospective purchaser.

LOWER LEVEL	: 1,422 SQ.FT- 132 SQ.M
MAIN LEVEL	: 1,426 SQ.FT- 133 SQ.M
TOTAL AREA	: 2,848 SQ.FT- 265 SQ.M